

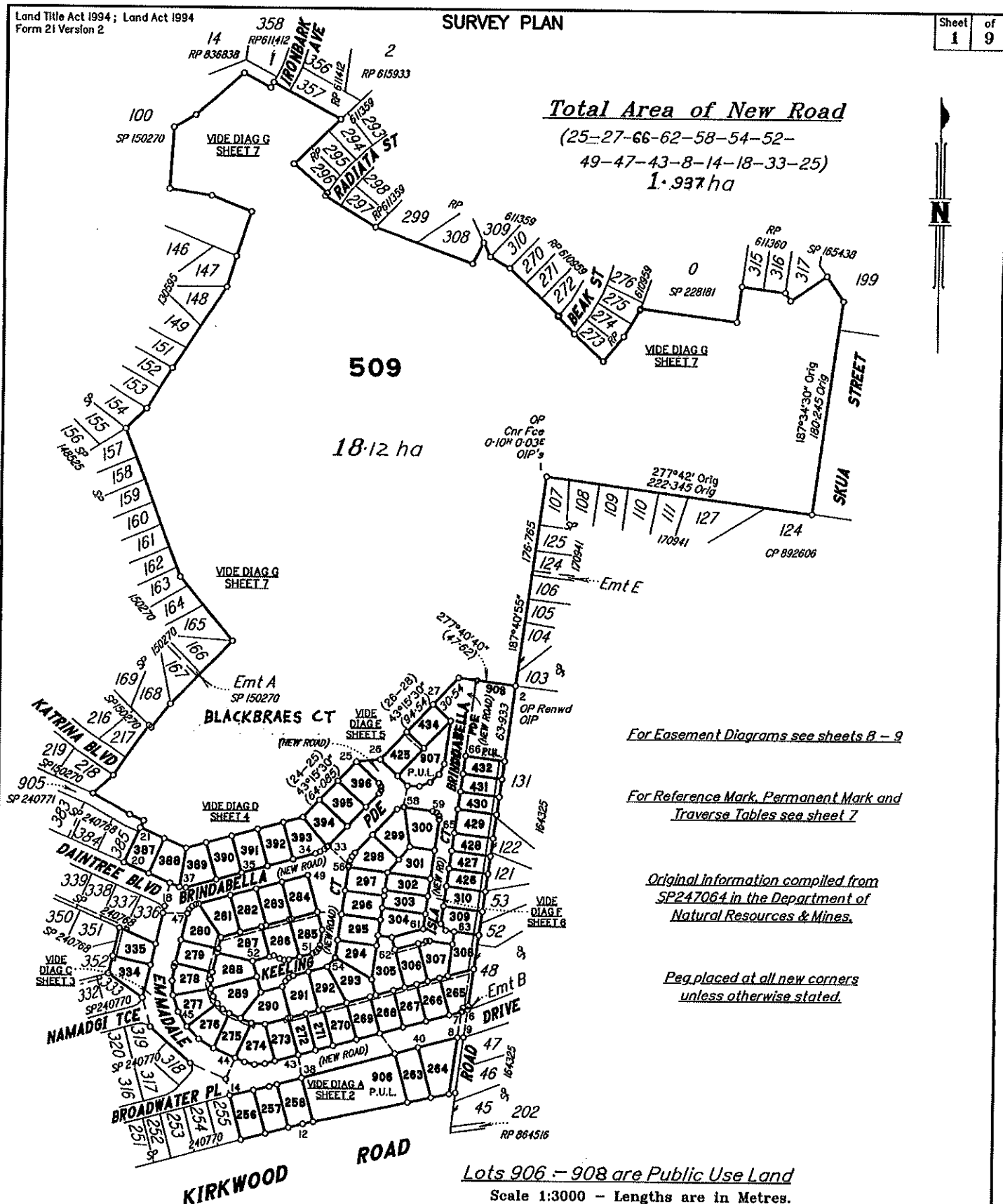
Land Title Act 1994; Land Act 1994
Form 21 Version 2

SURVEY PLAN

Sheet 1 of 9

Total Area of New Road

(25-27-66-62-58-54-52-
49-47-43-8-14-18-33-25)
1.937 ha



714691669

\$6968.35
24/09/2012 15:50

BE 400 NT

WARNING : Folded or Mutilated Plans will not be accepted.
Plans may be rolled.
Information may not be placed in the outer margins.

Registered

5. Lodged by
HWL Ebsworth Lawyers
GPO Box 2033
BRISBANE QLD 4001
PH: (07) 3002 6700
REF: JJE: MKF: 83114
(Include address, phone number, reference, and Lodger Code)

Lodger Code
88A

1. Certificate of Registered Owners or Lessees.

1/We PEET NO. 112 PTY LTD
A.C.N. 120 911 453

(Names in full)

* as Registered Owners of this land agree to this plan and dedicate the Public Use Land as shown hereon in accordance with Section 50 of the Land Title Act 1994.

* as Lessees of this land agree to this plan.

Signature of *Registered Owners *Lessees

Peet No 112 Pty. Ltd ACN 120 911 453 by its duly authorised attorney, Paul ENGEMAN - State Operations Manager - Level 1 Attorney - under Power of Attorney No. 713369235 713519814 and who has received no notice of the revocation of that attorney and who warrants that they have the requisite power

Peet No 112 Pty. Ltd ACN 120 911 453 by its duly authorised attorney, Jonathan EAST - HWL Ebsworth Lawyers Partner - Level 1 Attorney - under Power of Attorney No. 713369235 713519814 and who has received no notice of revocation of that attorney and who warrants that they have the requisite power

* Rule out whichever is inapplicable

2. Local Government Approval.

* GLADSTONE REGIONAL COUNCIL

hereby approves this plan in accordance with the:

% SUSTAINABLE PLANNING ACT 2009

Dated this 20th day of SEPTEMBER 2012

CHIEF EXECUTIVE OFFICER

* Insert the name of the Local Government. % Insert Integrated Planning Act 1997 or # Insert designation of signatory or delegation Local Government (Planning & Environment) Act 1990

3. Plans with Community Management Statement :

CMS Number :
Name :

4. References :

Dept File :
Local Govt :
Surveyor : G3459

Existing			Created		
Title Reference	Lot	Plan	Lots	Emts	Road
50872332	508	SP247064	256-258, 263-310, 334, 335, 387-396, 425-432, 434, 509, 906-908	A-Z AA-AG	New Rd

MORTGAGE ALLOCATIONS

Mortgage	Lots Fully Encumbered	Lots Partially Encumbered
713729059	256-258, 263-310, 334, 335, 387-396, 425-432, 434, 509	

ADMINISTRATIVE ADVICE

Administrative Advice	Lots to be Encumbered
711478791 (Veg Notice)	256-258, 263-310, 334, 335, 387-396, 425-432, 434, 509

ENCUMBRANCE EASEMENT ALLOCATIONS

Easement	Lots to be Encumbered
714146625 (Emt CG on SP240768)	334, 335
714146627 (Emt CG on SP240768)	334, 335

256-258, 263-310, 334, 335, 387-396, 425-432, 434, 509, 906-908

Por 467

Lots Orig

7. Portion Allocation :

8. Map Reference :
9150-32114

9. Locality :
NEW AUCKLAND

10. Local Government :
GLADSTONE R.C.

11. Passed & Endorsed :

By : Richard Jon Knox Ford
Date : 20-09-12
Signed :
Designation : Cadastral Surveyor

12. Building Format Plans only.

I certify that:
* As far as it is practical to determine, no part of the building shown on this plan encroaches onto adjoining lots or road.
* Part of the building shown on this plan encroaches onto adjoining lots and road

Cadastral Surveyor/Director * Date
* delete words not required

9. Locality :
NEW AUCKLAND

10. Local Government :
GLADSTONE R.C.

11. Passed & Endorsed :

By : Richard Jon Knox Ford
Date : 20-09-12
Signed :
Designation : Cadastral Surveyor

13. Lodgement Fees :

Survey Deposit \$
Lodgement \$
.....New Titles \$
Photocopy \$
Postage \$
TOTAL \$

14. Insert Plan Number
SP251455

ADDITIONAL SHEET

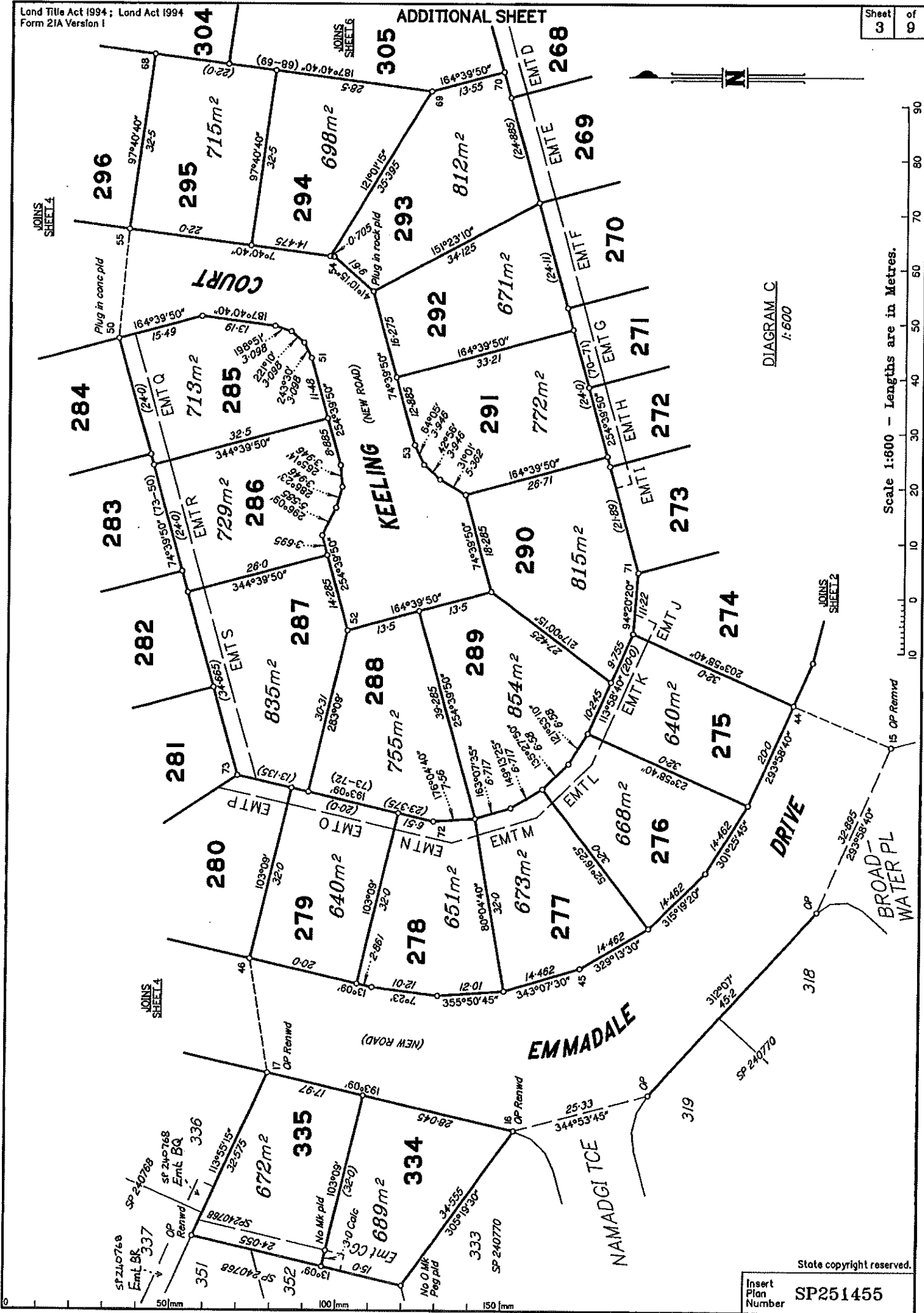


DIAGRAM C
1:600

Scale 1:600 - Lengths are in Metres.

State copyright reserved.

Insert Plan Number
SP251455

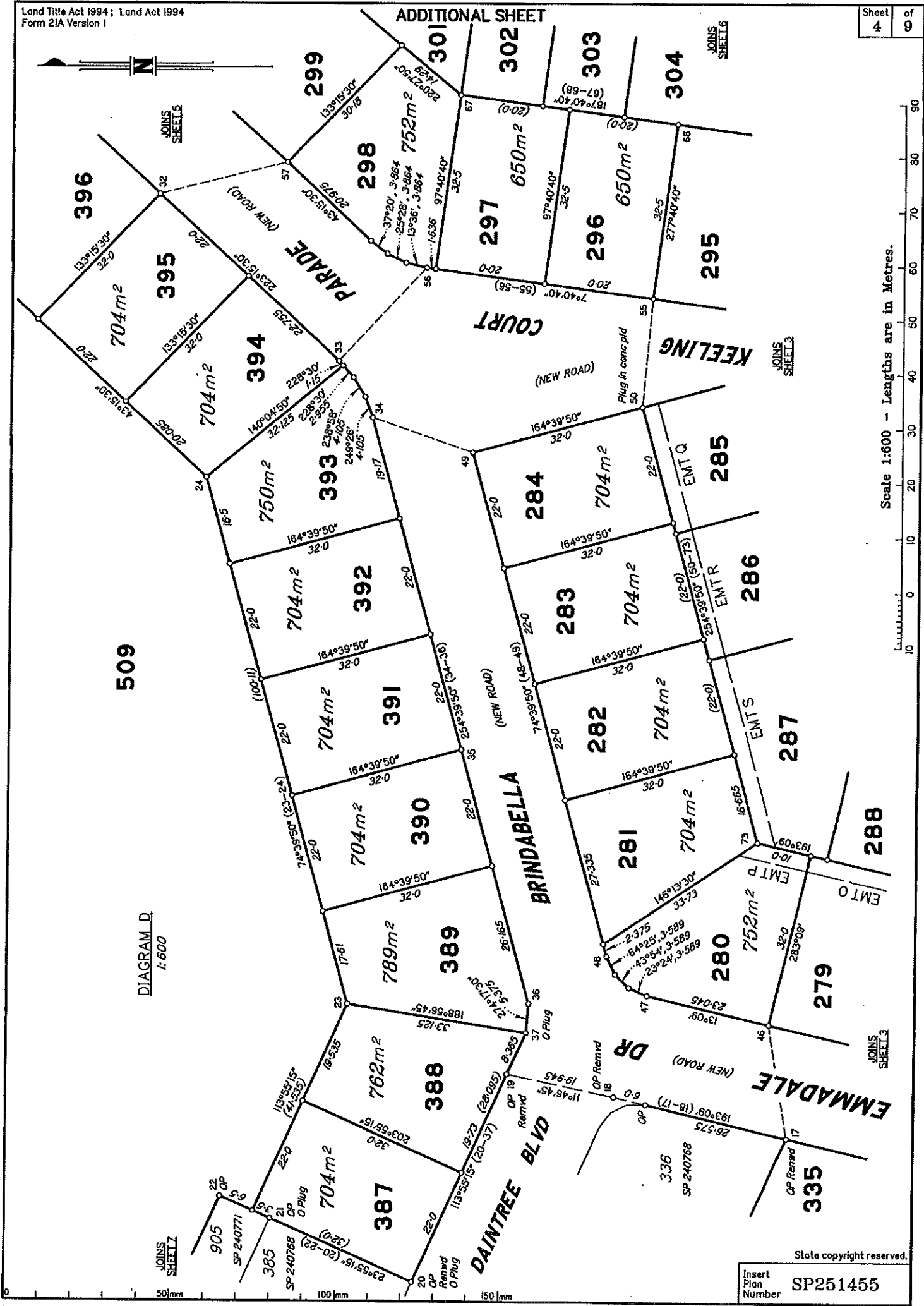
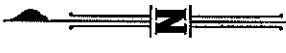


DIAGRAM D
1:600

Scale 1:600 - Lengths are in Metres.

State copyright reserved.

Insert Plan Number
SP251455

JOINS SHEET 2

50mm

100mm

150mm

JOINS SHEET 3

EMT O

EMT P

EMT S

EMT Q

EMT R

EMT T

EMT U

EMT V

EMT W

EMT X

EMT Y

EMT Z

EMT AA

EMT AB

EMT AC

EMT AD

EMT AE

EMT AF

EMT AG

EMT AH

EMT AI

EMT AJ

EMT AK

EMT AL

EMT AM

EMT AN

EMT AO

EMT AP

EMT AQ

EMT AR

EMT AS

EMT AT

EMT AU

EMT AV

EMT AW

EMT AX

EMT AY

EMT AZ

EMT BA

EMT BB

EMT BC

EMT BD

EMT BE

EMT BF

EMT BG

EMT BH

EMT BI

EMT BJ

EMT BK

EMT BL

EMT BM

EMT BN

EMT BO

EMT BP

EMT BQ

EMT BR

EMT BS

EMT BT

EMT BU

EMT BV

EMT BV

EMT BW

EMT BX

EMT BY

EMT BZ

EMT CA

EMT CB

EMT CC

EMT CD

EMT CE

EMT CF

EMT CG

EMT CH

EMT CI

EMT CJ

EMT CK

EMT CL

EMT CM

EMT CN

EMT CO

EMT CP

EMT CQ

EMT CR

EMT CS

EMT CT

EMT CU

EMT CV

EMT CW

EMT CX

EMT CY

EMT CZ

EMT DA

EMT DB

EMT DC

EMT DD

EMT DE

EMT DF

EMT DG

EMT DH

EMT DI

EMT DJ

EMT DK

EMT DL

EMT DM

EMT DN

EMT DO

EMT DP

EMT DQ

EMT DR

EMT DS

EMT DT

EMT DU

EMT DV

EMT DV

EMT DW

EMT DX

EMT DY

EMT DZ

EMT EA

EMT EB

EMT EC

EMT ED

EMT EE

EMT EF

EMT EG

EMT EH

EMT EI

EMT EJ

EMT EK

EMT EL

EMT EM

EMT EN

EMT EO

EMT EP

EMT EQ

EMT ER

EMT ES

EMT ET

EMT EU

EMT EV

EMT EV

EMT EW

EMT EX

EMT EY

EMT EZ

EMT FA

EMT FB

EMT FC

EMT FD

EMT FE

EMT FF

EMT FG

EMT FH

EMT FI

EMT FJ

EMT FK

EMT FL

EMT FM

EMT FN

EMT FO

EMT FP

EMT FQ

EMT FR

EMT FS

EMT FT

EMT FU

EMT FV

EMT FV

EMT FW

EMT FX

EMT FY

EMT FZ

EMT GA

EMT GB

EMT GC

EMT GD

EMT GE

EMT GF

EMT GG

EMT GH

EMT GI

EMT GJ

EMT GK

EMT GL

EMT GM

EMT GN

EMT GO

EMT GP

EMT GQ

EMT GR

EMT GS

EMT GT

EMT GU

EMT GV

EMT GV

EMT GW

EMT GX

EMT GY

EMT GZ

EMT HA

EMT HB

EMT HC

EMT HD

EMT HE

EMT HF

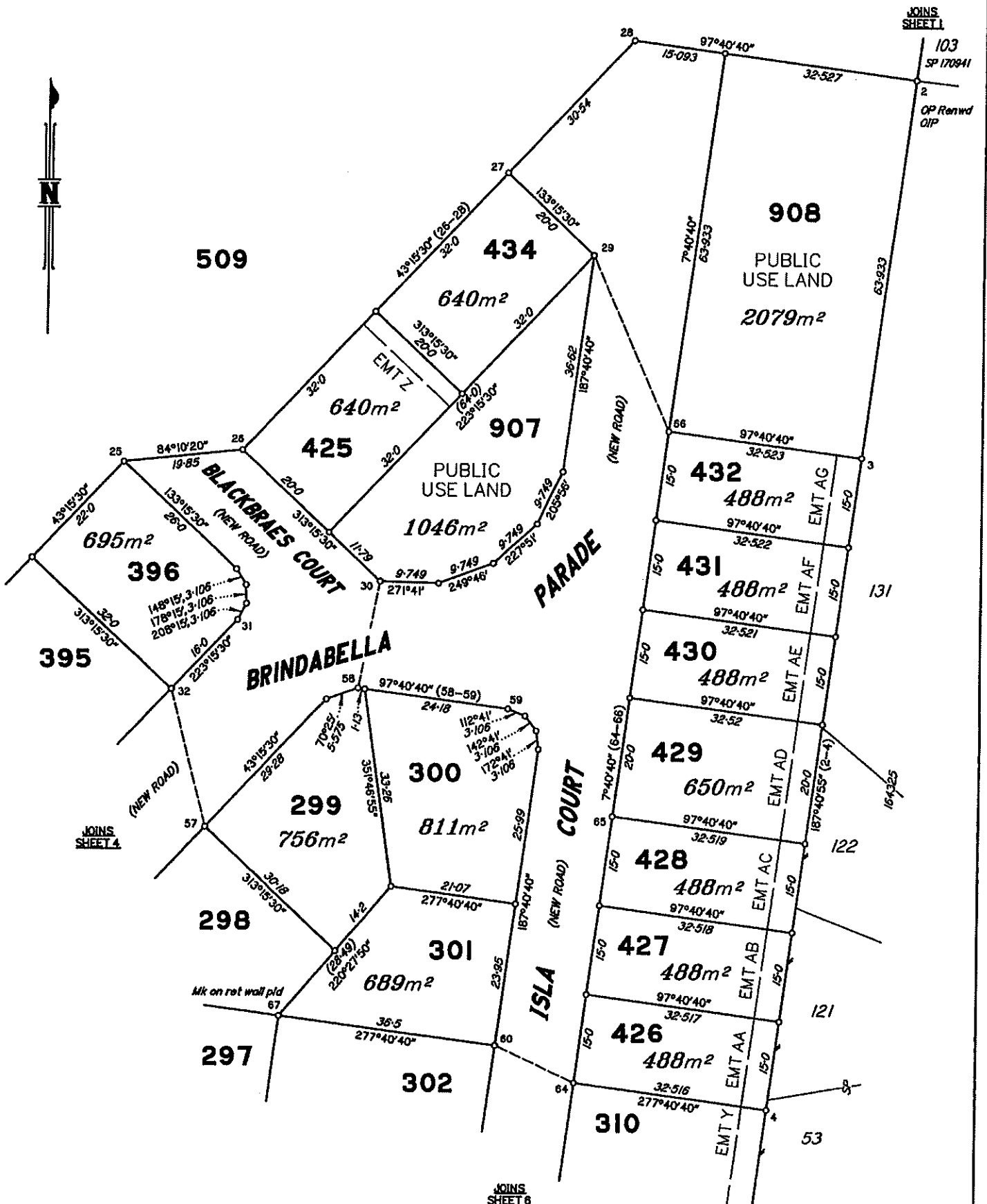
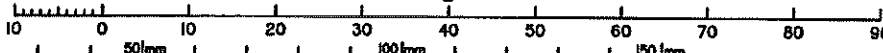


DIAGRAM E
1:600

Scale 1:800 - Lengths are in Metres.



State copyright reserved.

Insert Plan Number
SP251455

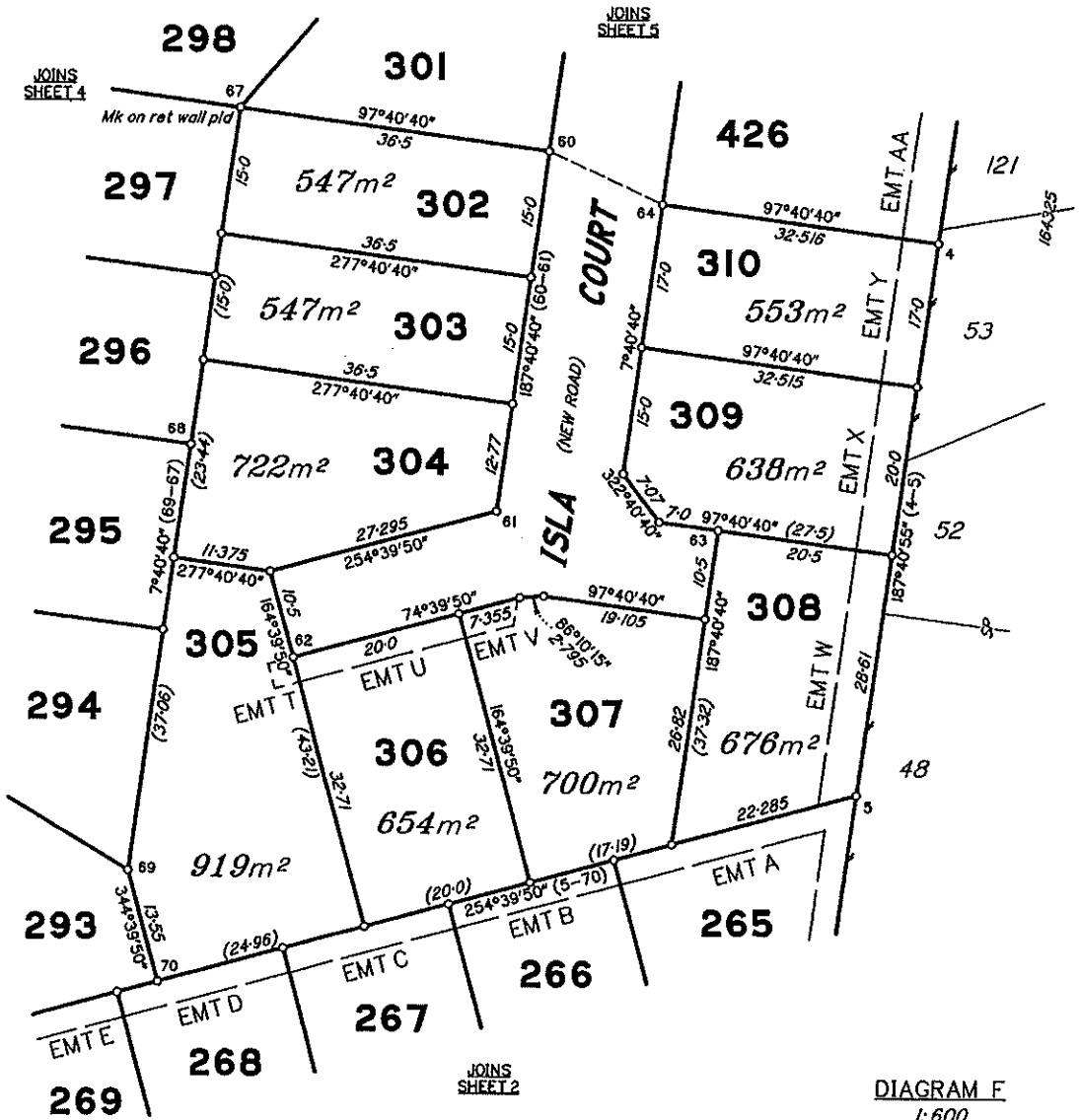
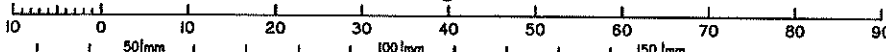


DIAGRAM F
1:600

Scale 1:600 - Lengths are in Metres.

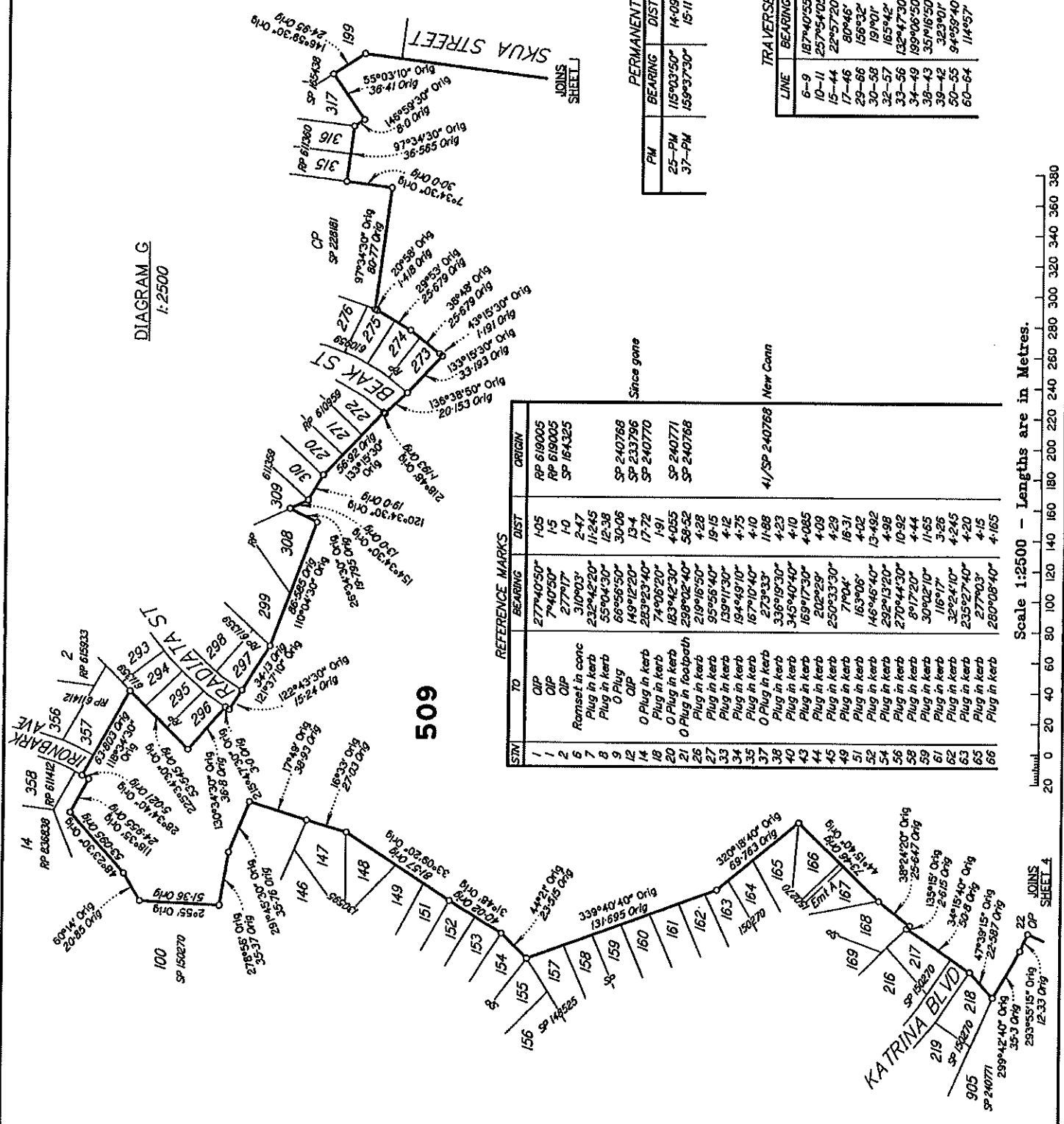


State copyright reserved.

Insert Plan Number SP251455



DIAGRAM G
1:2500



PM	BEARING	DIST	NO	TYPE
25-PM	15°03'50"	14.09	183823	Mini Mark
37-PM	159°37'30"	15.11	183822	Mini Mark

LINE	BEARING	DISTANCE
6-9	187°40'53"	22.289
10-11	257°54'05"	5.315
15-44	22°57'20"	19.505
17-48	80°46'	21.09
29-66	156°32'	32.09
30-58	191°01'	18.29
32-57	165°42'	23.7
33-56	132°47'30"	23.49
34-49	199°06'50"	19.405
38-43	351°16'50"	19.63
39-42	323°01'	20.98
50-55	94°59'40"	20.075
60-64	114°57'	14.66

STN	TO	BEARING	DIST	ORIGIN
1	OP	277°40'50"	1.05	RP 619005
1	OP	7°40'50"	1.5	RP 619005
2	OP	277°17'	1.9	SP 164325
6	Remaset in conc	310°03'	2.47	
7	Plug in kerb	232°42'20"	11.245	
8	Plug in kerb	55°04'30"	12.38	
9	O Plug	66°56'50"	30.06	
12	OP	149°12'20"	13.4	SP 240768
14	O Plug in kerb	263°23'40"	17.72	SP 233796
18	OP	74°06'20"	1.91	SP 240770
20	O Plug in kerb	183°42'30"	4.055	SP 240771
21	O Plug in kerb	258°02'40"	58.52	SP 240768
26	Plug in kerb	219°16'50"	4.28	
27	Plug in kerb	95°56'40"	19.15	
33	Plug in kerb	139°17'30"	4.12	
34	Plug in kerb	194°49'10"	4.75	
35	Plug in kerb	167°10'40"	4.10	
37	O Plug in kerb	273°33'	11.88	
38	Plug in kerb	336°19'30"	4.23	
40	Plug in kerb	345°40'40"	4.10	
43	Plug in kerb	169°17'30"	4.085	
44	Plug in kerb	202°29'	4.09	
45	Plug in kerb	250°33'30"	4.29	
49	Plug in kerb	71°04'	16.31	
51	Plug in kerb	163°06'	4.02	
52	Plug in kerb	146°46'40"	13.492	
54	Plug in kerb	282°13'20"	4.98	
56	Plug in kerb	270°44'30"	10.92	
58	Plug in kerb	8°17'20"	4.44	
59	Plug in kerb	30°02'10"	11.65	
61	Plug in kerb	116°17'	3.26	
62	Plug in kerb	32°24'10"	4.245	
63	Plug in kerb	235°27'40"	4.20	
65	Plug in kerb	277°03'	4.15	
66	Plug in kerb	280°08'40"	4.165	

Scale 1:2500 - Lengths are in Metres.

DIAGRAM I
1:400

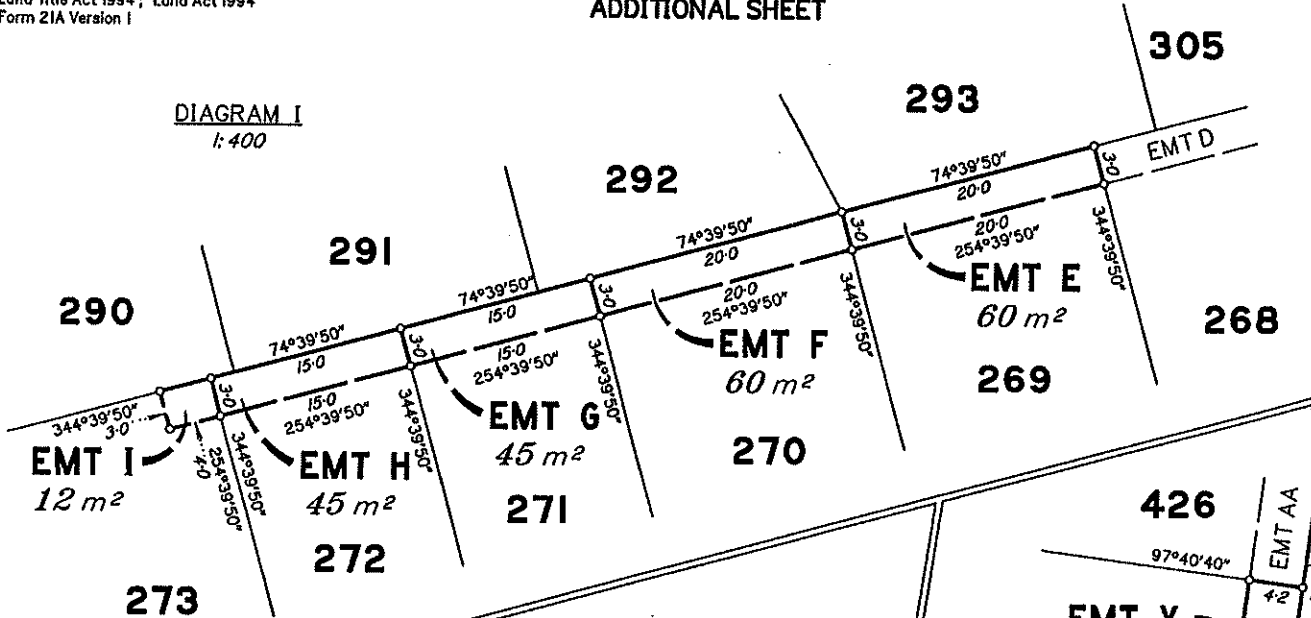


DIAGRAM J
1:400

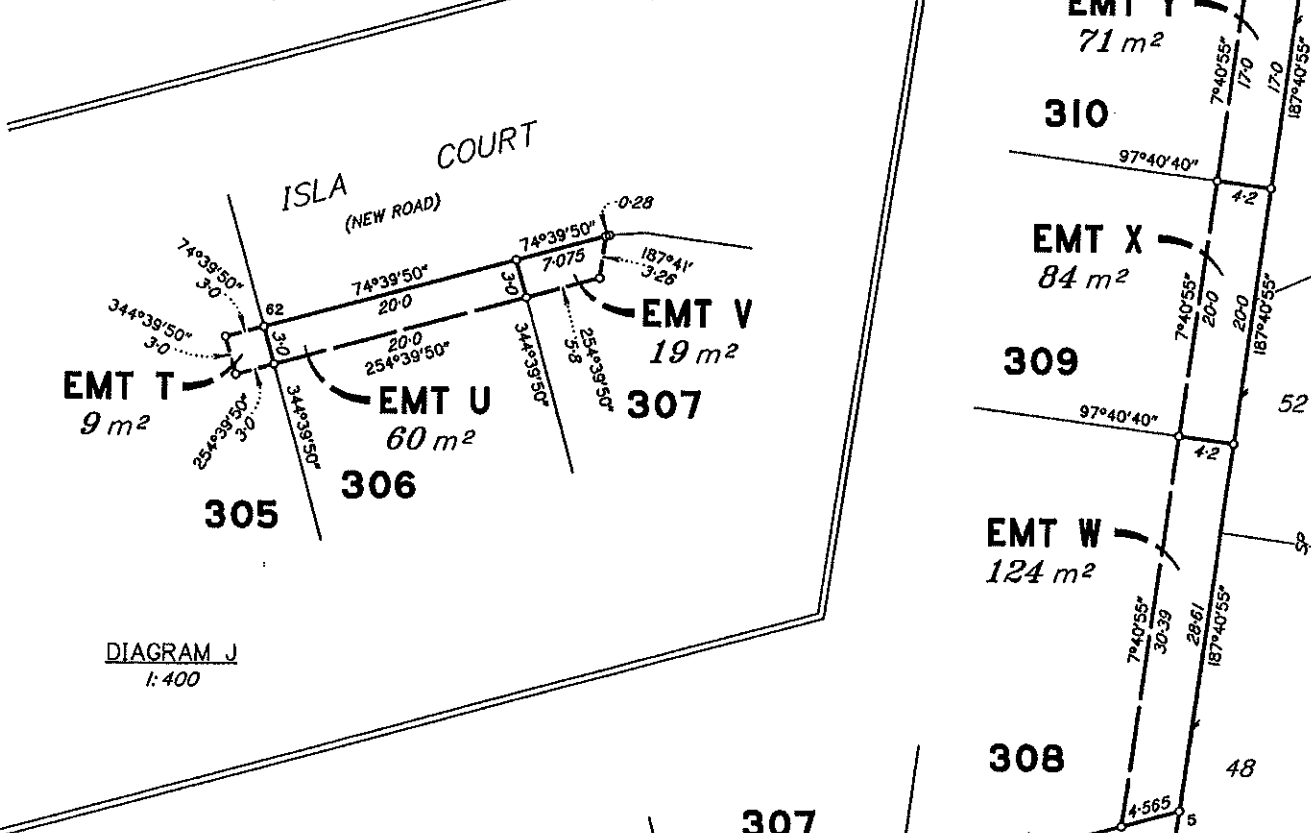
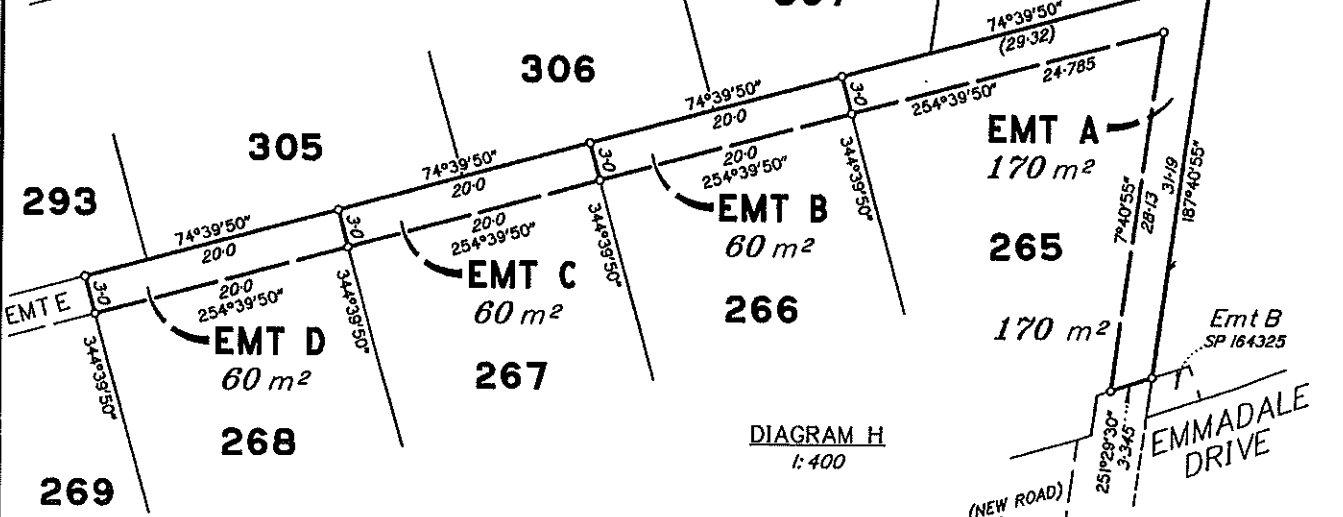
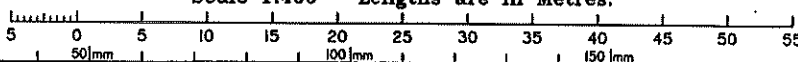


DIAGRAM H
1:400



Scale 1:400 - Lengths are in Metres.



State copyright reserved.

Insert Plan Number SP251455

DIAGRAM K
1:400

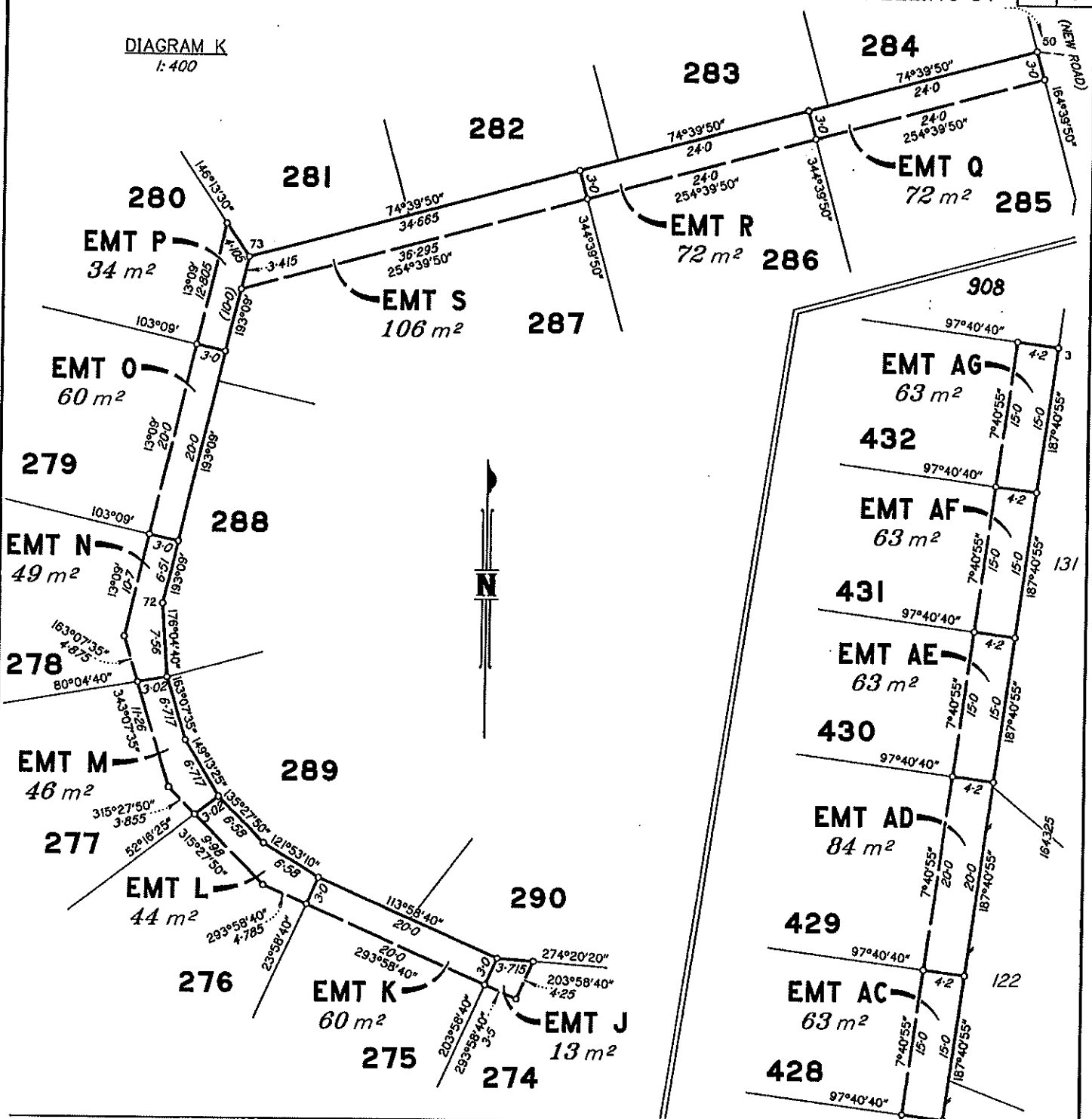


DIAGRAM L
1:400

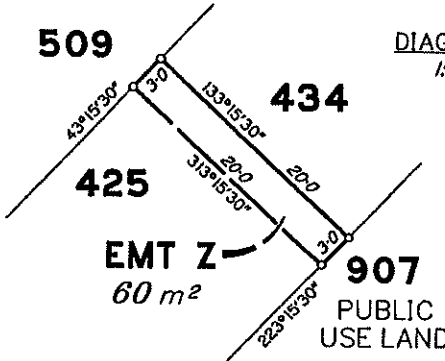
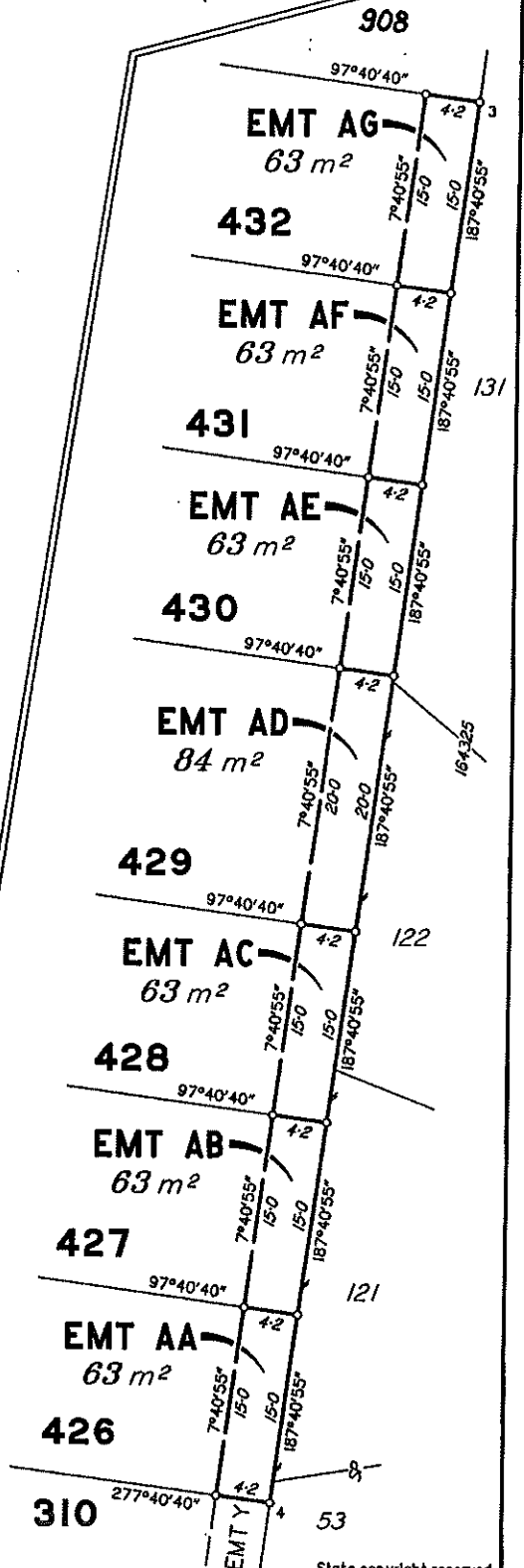
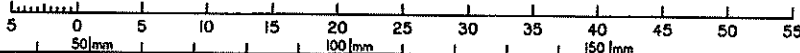


DIAGRAM M
1:400



Scale 1:400 - Lengths are in Metres.



State copyright reserved.

Insert Plan Number SP251455